

20 Triton Street

Work Ready

11,398 SQ FT FITTED WORKSPACE

A place
for revolutionary
thinking



Where innovation finds inspiration

20
Triton
Street

11,398 SQ FT OF PREMIUM FITTED WORKSPACE
IN THE HEART OF THE KNOWLEDGE QUARTER

20 Triton Street is conveniently located on the Regent's Place campus. The 9-storey building features a revitalised reception with bright open breakout spaces and newly refurbished end of trip facilities.

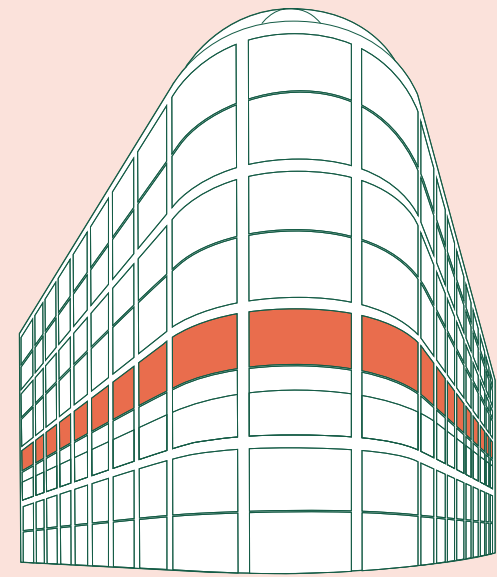


20 Triton Street has been designed to create opportunities for connection and collaboration. The spacious reception area is a natural place for our community to gather, share ideas and unlock future-focused directions.



Third floor plan

11,398 sq ft



Key

- Open plan workspace
- Meeting rooms
- Tea Point
- WCs
- Core

Workstations	88
16p Board Room	1
8p Meeting Room	2
4p Meeting Room	2
2p Meeting Room	1
2p Booths	2
1p Booths	2

20
Triton
Street

Work Ready

Fully fitted, furnished and connected.

Work Ready offer effective & sustainable workspaces. So you can focus on your business and settle into your new home swiftly and smoothly.

READY TO GO

Fitted, furnished & connected. Everything you need to start working is included.

TERM

Short, mid or long-term leases that flex to suit you.

Options to suit you

FITTED

All of the usual building services plus the ability to use our 1GB fibre connection.

FULLY MANAGED

Get all the services you need to run your workspace for one monthly price.

Options to suit you

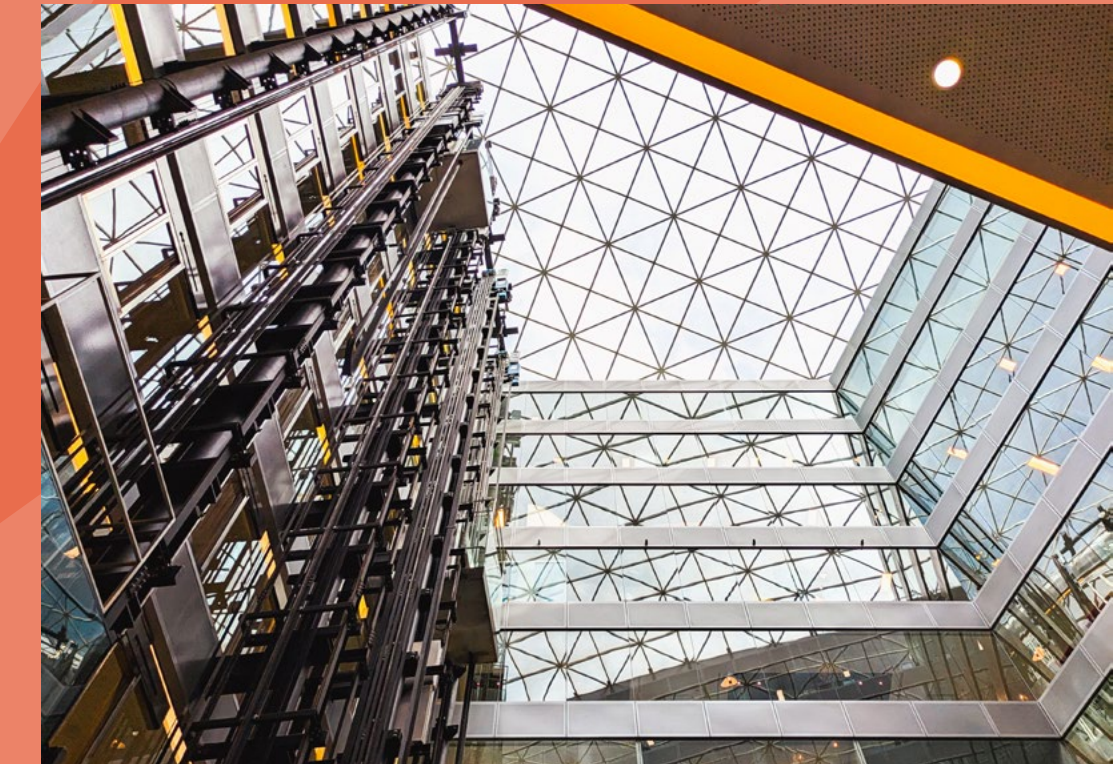
	Fitted	Fully Managed
Fully furnished	•	•
Flexible leasing options	•	•
Sustainable Workspaces	•	•
Access to building end of trip facilities	•	•
Access to high speed fibre connection	•	•
Fixed monthly cost		•
Fully managed WiFi connectivity		•
Health & Safety Support		•
M&E maintenance		•
Waste Removal & Recycling		•
Cleaning incl WC consumables		•
Utilities		•
Workspace Support from Shared Property Manager		•



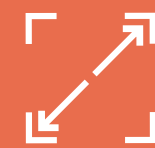
Fully fitted, furnished and connected



MEETING ROOM*



ATRIUM*



11,398 sq ft
space



Refurbished double
height reception with atrium,
accessed from the
pedestrianised Triton Street



WiredScore
'Gold'

BREEAM®

BREEAM
'Excellent'



High specification
end-of-trip facilities,
21 showers & 258 lockers



308
bike racks

EPC

Rated B



My Regent's
Place App



Meeting
Rooms



TEA POINT*

20
Triton
Street

*All images are indicative CGI's.

Where
connections



shape
tomorrow's
world

REGENT'S PLACE

One of the world's great innovation quarters

Regent's Place is at the heart of the Knowledge Quarter, home to over 100 academic, scientific and cultural organisations and one of the world's leading innovation clusters. It is a dynamic, collaborative environment, intentionally created to facilitate meaningful connections.



20
Triton
Street

∞ Meta
1

DeepMind
2

Google
3

THE FRANCIS CRICK INSTITUTE
4

synthesia
5

dentsu
6

BRITISH LIBRARY
7

The Alan Turing Institute
8

W
wellcome
9

UCL
10

Santander
11

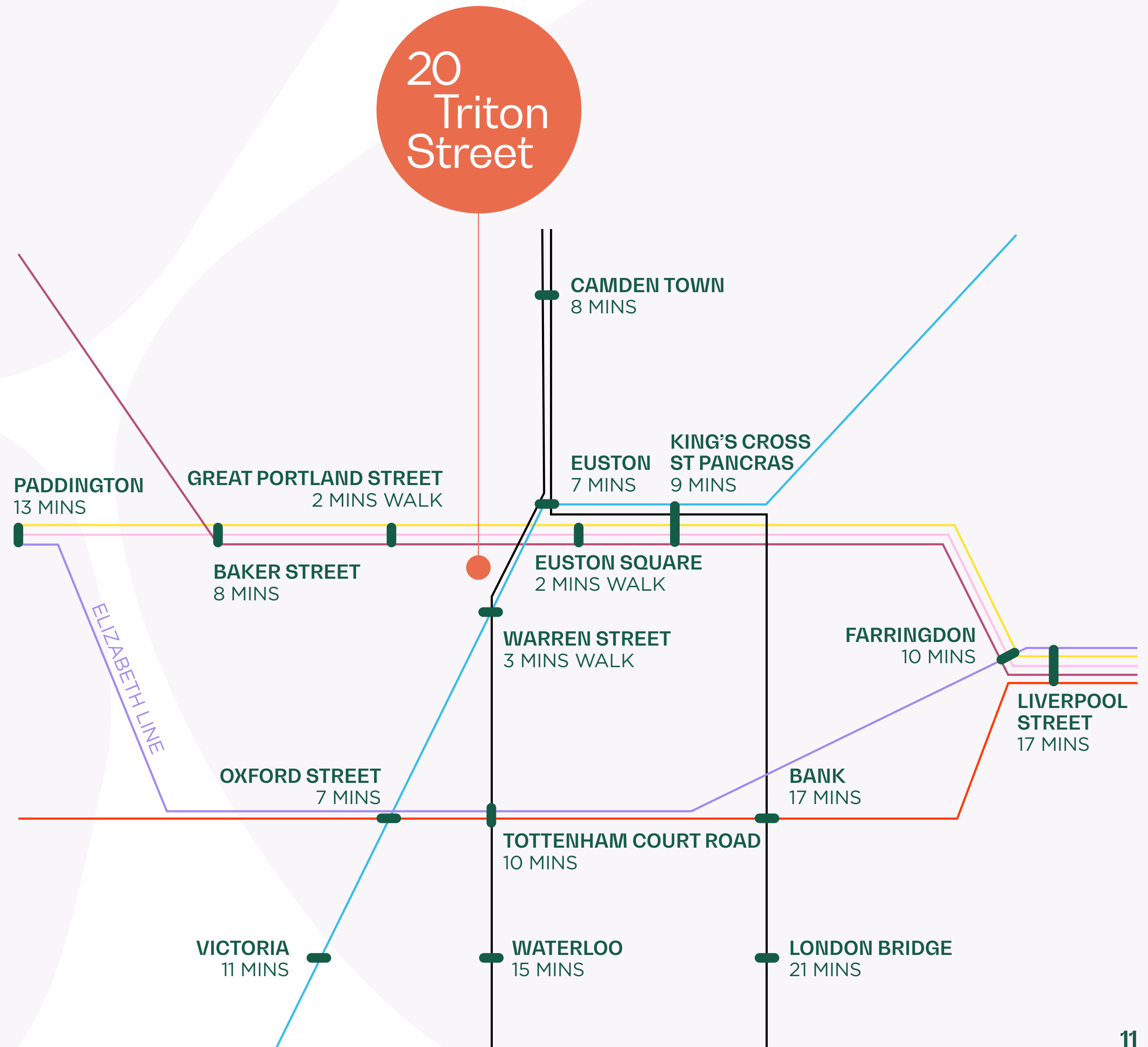
13-acre Innovation Campus with 1.5m sq ft of workspace



Central & connected

Equidistant between King's Cross and Paddington Stations — the capital's connection points for Oxford and Cambridge - Regent's Place is hyper-connected with national & international connections including Crossrail, airport links and access to the Elizabeth Line.

20
Triton
Street





10 BROCK STREET ATRIUM

Ideal for hosting large, special events in an impactful setting.

LOCATION 10 Brock Street
CAPACITY 300



20 TRITON STREET ATRIUM

A bright space with different seating areas for team meetings or larger events.

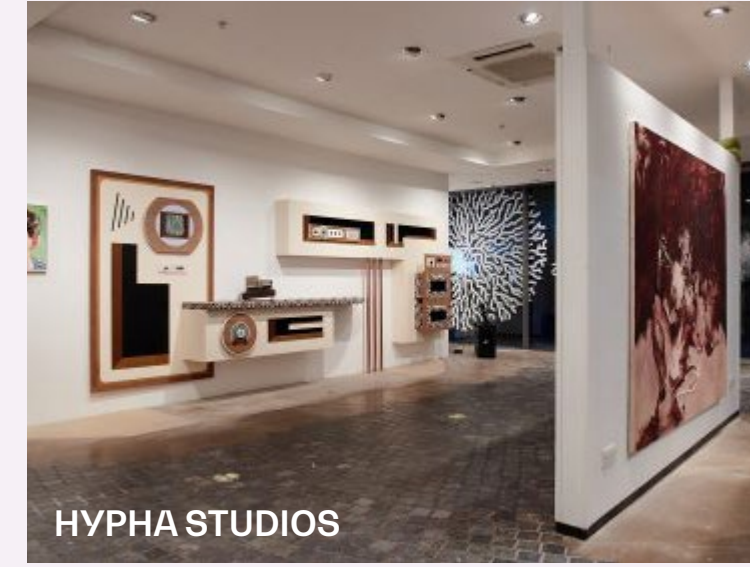
LOCATION 20 Triton Street
CAPACITY 150



GOOD COMPANY

Hire the whole space for a panel discussion, networking event or smaller workshop.

LOCATION 17-19 Triton Street
CAPACITY 200



HYPHA STUDIOS

Creative studio space available for private hire.

LOCATION Euston Tower
CAPACITY 80



STOREY AT 338

Flexible workspace with shared spaces including the 18-person boardroom.

LOCATION 338 Euston Rd
CAPACITY 18



Space to meet. Room to thrive.

The entire Regent's Place campus is an extension of your own workplace. From private meeting rooms to event auditoriums, our hireable spaces are equipped with the latest tech to facilitate productive collaboration.

20
Triton
Street



IMPACT HUB

Affordable workspace, co-working and an event space for up to 200 people.

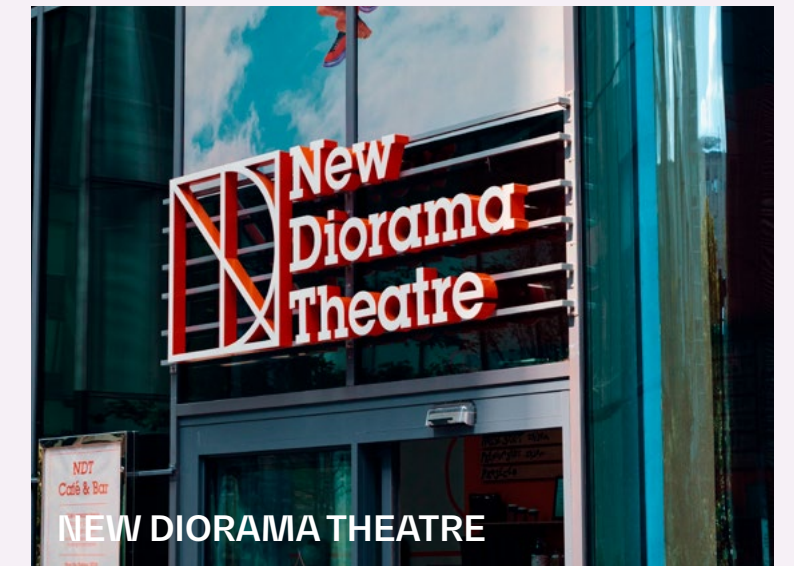
LOCATION 1 Triton Square
CAPACITY Theatre Style: 120
Standing: 200
Workshop 1: 50
Workshop 2: 51



OLD DIORAMA ARTS CENTRE

Meeting rooms to full versatile creative studios and workspace.

LOCATION 201 Drummond Street
CAPACITY Office space: 2-8
Studios: 20-50



NEW DIORAMA THEATRE

Hire the whole theatre for presentations, talks or events.

LOCATION 20 Triton Street
CAPACITY Theatre Style: 81
Standing: 120
Studio: 20-60

A visionary, vibrant neighbourhood for an elevated work day experience.



REGENT'S PLACE PLAZA



REGENT'S PARK

20 Triton street is where innovation finds inspiration. Where the world's brightest talent is immersed in exciting central London culture. Step out from the beautiful plaza and wild flower gardens of Regent's Place, while the vibrant restaurants, cafés and shops of Camden, Marleybone, Fitzrovia and Soho are just minutes away.

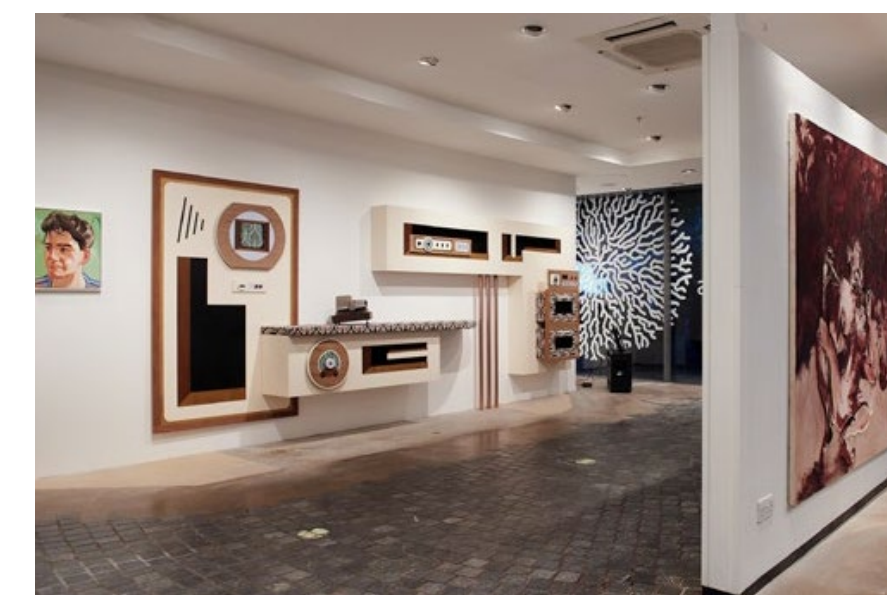
Campus events, public meeting spaces, plus superb retail, fitness and dining amenities create social touch points that elevate the workday experience. It's a clean, pedestrianised, landscaped public environment where people enjoy spending time.

20
Triton
Street

THE UNION



THE BRITISH MUSEUM



HYPHA STUDIOS

NEW DIORAMA THEATRE



Prioritising sustainability and creating lasting legacies

From the tiny adjustments that collectively improve our energy intensity, to green roofs and gardens that support wellbeing, we take a holistic approach to sustainability to keep health, community and nature in perfect balance.

We believe that our success should also benefit the lives of local people. Over the past 40 years we've created employment opportunities, supported businesses, schools and charities, while also contributing to community group initiatives.



ZERO WASTE TO LANDFILL
100% of the waste we manage has been diverted from landfill since 2014



100% RENEWABLE
100% of the energy we buy comes from renewable sources

BREEAM®

OUTSTANDING
1.1 million+ sq ft of BREEAM Outstanding and Excellent space delivered



ENERGY EFFICIENCY
21% reduction in energy intensity since 2019



CAMPUS APP
The platform to help manage every part of your day. Enjoy exclusive deals, contactless entry, meeting room bookings and more

20
Triton
Street

GOOD-NATURED SPACES
8,000 sq ft of affordable space made available to local businesses and community groups.



EDUCATION
1,700+ local children have joined our Young Readers' Programme since 2016.



LOCAL PEOPLE
14,500+ local people benefited since 2021.



PARTNERSHIP
39 years partnering with our Camden community's schools and youth groups.

COMMUNITY FUND
£200,000+ raised.



20 Triton Street



KATIE BLOWERS
M. 07435 987 572
katie.blowers@britishland.com

GEORGIA HOGG
M. 07921 742 553
georgia.hogg@britishland.com

AMY HOCKLEY
M. 07717 272 446
amy.hockley@britishland.com



ADAM COSGROVE
M. 07500 872 851
adam.cosgrove@cbre.com

GEORGINA WILLOUGHBY
M. 07788 706 031
georgina.willoughby@cbre.com

ALEXANDER RAE
M. 07824 417 097
alexander.rae@cbre.com



PAUL GOLD
M. 07779 100 875
paul@kontor.com

SAM DAVIS
M. 07403 226 453
sam.davis@kontor.com

LUKE PARKINSON
M. 07464 715 644
luke.parkinson@kontor.com



The British Land Company PLC, its group entities and their agents give notice that these particulars are set out as a general outline only, for the guidance of intending purchasers or tenants and do not constitute, nor constitute part of, an offer or contract. All descriptions, dimensions, references to condition and necessary permission for use in occupation and other details are given without responsibility, and any intending purchasers or tenants should not rely on them as statements or representations of fact, but must satisfy themselves by inspection or otherwise as to the correctness of each of them. All floor areas and measurements are approximate March 2025.