

Partnering for

SUSTAINABLE FUTURES

Greener Spaces. Thriving Places. Responsible Choices.



Contents

THRIVING PLACES

- 5 Meet your Social Impact Manager
- 6 Collaboration: Regent's Place Community Fund
- 7 Employment: Brights Lights
- 8 Education: Programmes and Partnerships

GREENER SPACES

- 10 Meet your Regent's Place Technical Services Team
- 11 Resources: Energy and Waste
- 12 Operational Carbon: Smart Buildings
- 13 Embodied Carbon: Fitouts and Furniture

“Pioneering businesses thrive in environments that are sustainable, socially conscious, and future-ready. In the home of science and innovation, we are committed to integrating sustainability into every aspect of the Regent’s Place campus, from its inception to ongoing operation.

Our customers are part of a well-established innovation ecosystem, benefiting from abundant biodiverse landscaping and low carbon, energy efficient buildings that nurture wellbeing and productivity. We actively promote a sustainable future by leveraging our knowledge and expertise to innovate and collaborate with our customers, helping us achieve our sustainability objectives, together.

With over 30 years of social sustainability engagement, Regent’s Place has a long-standing record of working closely with our neighbourhoods. Our dedicated Social Impact Manager is embedded in the network of local partners and is eager to collaborate with customers who are keen to make a meaningful social impact in the communities on our doorstep.”

EMMA EDWARDS

Estate Director
Regent’s Place

Welcome



Thriving Places

At Regent's Place, we've been working closely with the local community for a long time.

We use our experience and connections and partner with customers to drive long-lasting social impact, together.

NDIDI OKOYE
Senior Social
Impact Manager



Meet your Social Impact Manager

Do you want to make a real social impact on your doorstep?

Working directly with the Regent's Place team, Ndidi helps the businesses who call Regent's Place home to connect with local people - from schools and community groups to employment partners and local councils.

Regent's Place Customer Network

Ndidi supports connecting Regent's Place businesses to build lasting connections, explore areas of interest, learn and identify opportunities to collaborate - from promoting diversity, equality and inclusion to tackling homelessness.

Benefits for you

- ✔ Access expert knowledge of local needs and opportunities.
- ✔ Efficiently offer volunteering opportunities to colleagues.
- ✔ Leverage our initiatives to assist your corporate sustainability goals.
- ✔ Connect with like-minded individuals from across the campus to make a positive difference locally.

For ready-to-join initiatives and local partners, or to join the network and community fund [contact Ndidi here.](#)

Regent's Place Community Fund

A collaboration between Regent's Place businesses created to scale our impact, recognising that we can all achieve more together in Camden.

Ways to get involved

Contribute to this year's round of the Fund and join our meetings, where all pledging businesses agree priority themes, award grants, track progress and celebrate impact.

Benefits for you

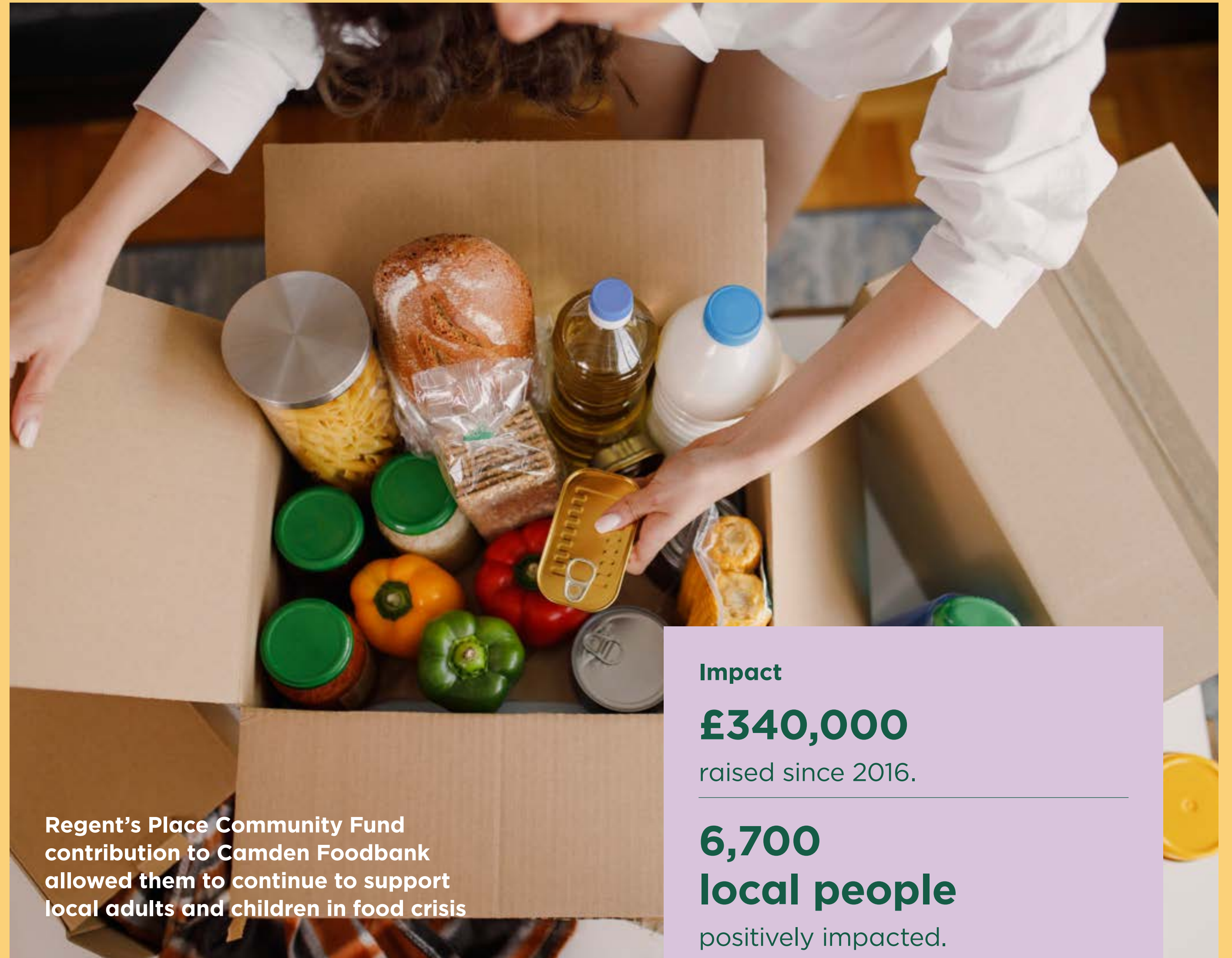
- ✔ Positively impact individuals in your local area.
- ✔ Participate in high-value volunteering on your doorstep.
- ✔ Network with like-minded, action-focused companies on campus.

Thanks to past funding partners

Meta, Lendlease, SEFE, Dentsu, Samsic, CIS Security

Find out more and make a pledge

[Get in touch with Ndidi here.](#)



Regent's Place Community Fund contribution to Camden Foodbank allowed them to continue to support local adults and children in food crisis

Impact

£340,000

raised since 2016.

6,700

local people

positively impacted.

Bright Lights

Our employment programme - Bright Lights - has been connecting Regent's Place businesses with diverse local talent since 2012.

At Regent's Place, our social impact focus is aspirational employment. Working with businesses across the campus, this programme engages underrepresented groups and prioritises people facing barriers into employment.

Dedicated to providing employment opportunities to local residents of all ages. Bright Lights focuses on enhancing diversity and inclusion.

Ways to get involved

Share live job vacancies; host insight sessions for local people in your offices; or join expert volunteering, helping candidates with CV writing and interview preparation.

Benefits for you

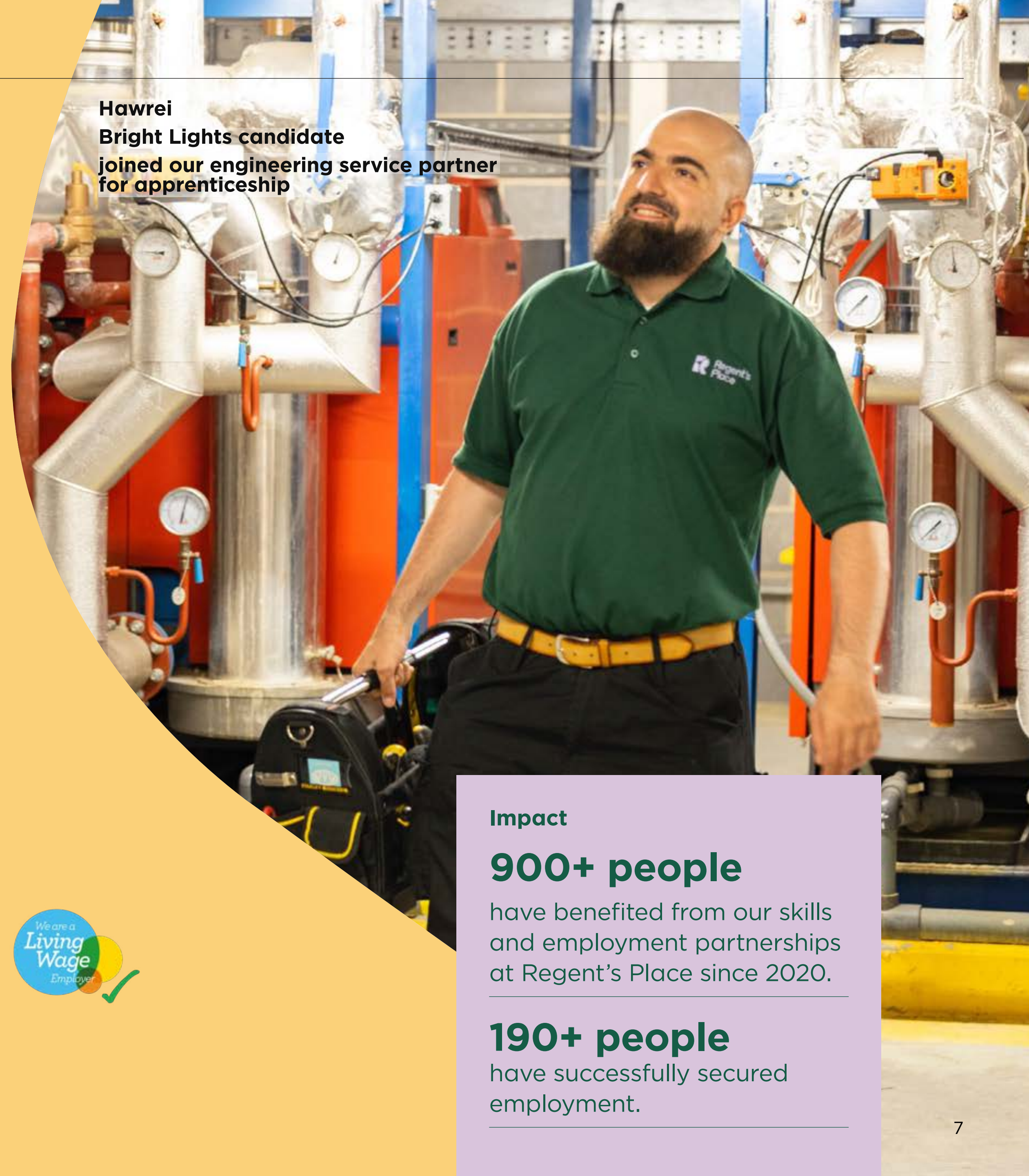
- ✔ Increase the diversity of your recruitment pool.
- ✔ Positively impact individuals in your local area.
- ✔ Develop colleagues' skills.

Regent's Place is an accredited Living Wage Employer - meaning everyone we employ is paid at least the London Living Wage.

Join the programme
Get in touch with the team here.



Hawrei
Bright Lights candidate
joined our engineering service partner
for apprenticeship



Impact

900+ people

have benefited from our skills and employment partnerships at Regent's Place since 2020.

190+ people

have successfully secured employment.

Programmes and Partnerships

Impact

6,400+ local young people

have benefited from our education partnerships since 2020.

6,100+ books donated

to local children through our award-winning Young Readers partnership with the National Literacy Trust since 2016.



School children participating in our Young Readers Programme

Our education partnerships promote social mobility, grow skills and strengthen communities – from encouraging a love for reading to sharing insights into the professional world.

Ways to get involved

Host insight days for local students, join campus educational events, visit schools, offer work experience and mentoring, and support local school requests.

Benefits for you

- ✔ Upskill local students and increase their opportunities.
- ✔ Raise awareness of careers in your sector.
- ✔ Grow a future local talent pipeline.
- ✔ Open volunteering opportunities for your colleagues.

Partner with us for a positive impact – get in touch with Ndidi here.

Greener Spaces

We're committed to reducing whole-life carbon for a greener Regent's Place by 2030.

We integrate carbon intelligent decision making into the design and operation of the whole campus, and partner with our customers to help make their space as energy efficient as possible.



Regent's Place businesses joined our thought leadership event on how to improve energy efficiency

Meet your Regent's Place Technical Services Team

Do you have climate goals to achieve or simply want to reduce your energy bills?

Draw on our team's experience and expertise to accelerate your progress. Our technical specialists can help you improve the performance of your space. Leverage tried-and-tested initiatives or partner with us to discover new approaches to meet your corporate sustainability goals.

Join us quarterly

Discover more about initiatives and opportunities in your building and explore topics of interest – from reducing your operational carbon and the circular economy, to nature strategies and wellbeing.

Our support

Have questions? Do you need help making your space more efficient? Get in touch with the [Regent's Place team here](#).

Impact

20% decarbonisation vs 2019

working towards 75% reductions by 2030.*

Avg. 73% savings in gas

Plus, avg. 43% savings in electricity over a decade at 350 Euston Road, following the installation of the air source heat pump.

*Reductions in operational carbon intensity across Regent's Place.

Energy and Waste

With more than a decade's success in improving energy efficiency across our office portfolio, we can help you accelerate decarbonisation in your space and cut energy bills.

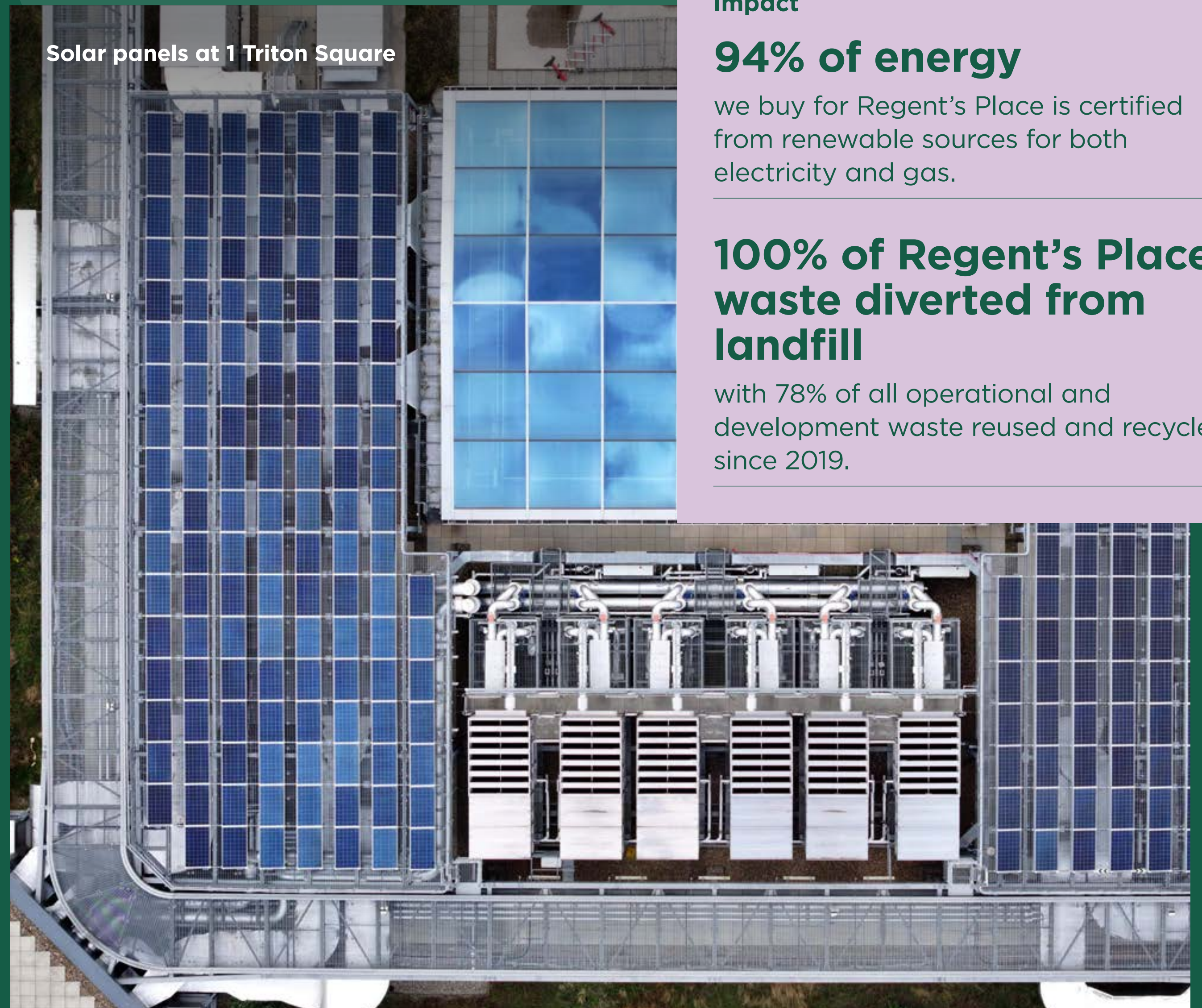
Benefit from

- ✔ Monthly dashboard of electricity and gas use.
- ✔ Quarterly review of performance year-on-year.
- ✔ Energy audits for your space through our whole building reviews, highlighting opportunities to optimise wherever possible.
- ✔ Waste management service and advice to increase recycling.
- ✔ Updates on interventions to help decarbonise your building.

Get in touch

To optimise your space and operations, [talk to our Technical Services Team here.](#)

Solar panels at 1 Triton Square



Impact

94% of energy

we buy for Regent's Place is certified from renewable sources for both electricity and gas.

100% of Regent's Place waste diverted from landfill

with 78% of all operational and development waste reused and recycled since 2019.

Smart Buildings

We've developed smart building technology which can help you optimise any operating systems within your space, such as heating, cooling and lighting. We help customers save energy by switching systems from time-scheduled controls to reacting to occupancy levels.

Benefit from

- ✔ Optimised building control.
- ✔ Automated building operation.

MY BUILDING

As we continue to redevelop new and retrofit existing buildings, our MyBuilding platform provides an enhanced level of service to collate data from multiple systems into a single dashboard.

This enables deeper insight into space performance, considering energy use, occupancy, air quality, natural daylight and outdoor temperatures, to make educated interventions for a more sustainable workspace.

Additional benefits

- ✔ Single source of truth dashboard to visualise energy data for multiple systems
- ✔ Auto fault reporting with Computer-Aided Facility Management

Discuss your options

[Chat to our Digital Placemaking Team here.](#)

Storey fitout at 338 Euston Road.



Fitouts and Furniture

Fitting new furniture, lighting, flooring and equipment to provide the best workspace for your people can come at a high carbon cost. Partner with us to achieve high quality, low carbon solutions.

Benefit from

- ✔ Expert advice, including LED lighting upgrades.
- ✔ Furniture menu of quality, responsibly sourced, long life items.
- ✔ Tried-and-tested reuse partners for unwanted items.
- ✔ Sustainable fitout guide.

How to get involved

To discuss your upcoming fitout or receive our sustainable fitout guide, [contact our team here.](#)

To find out more information on our sustainability strategy, programmes and initiatives, visit: www.regentsplace.com/sustainability